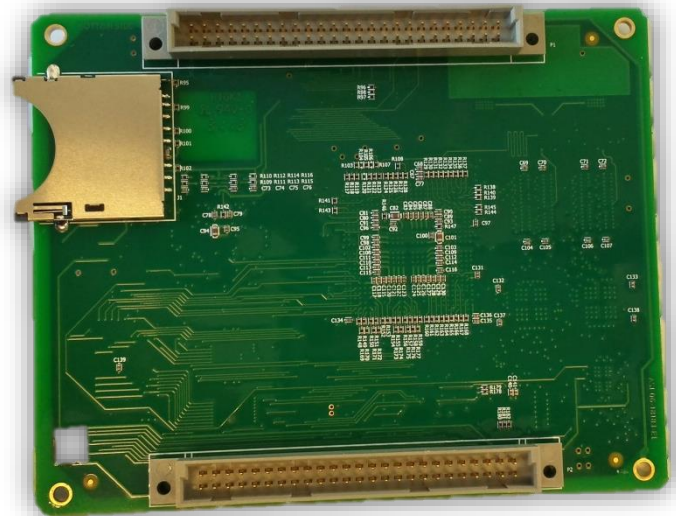
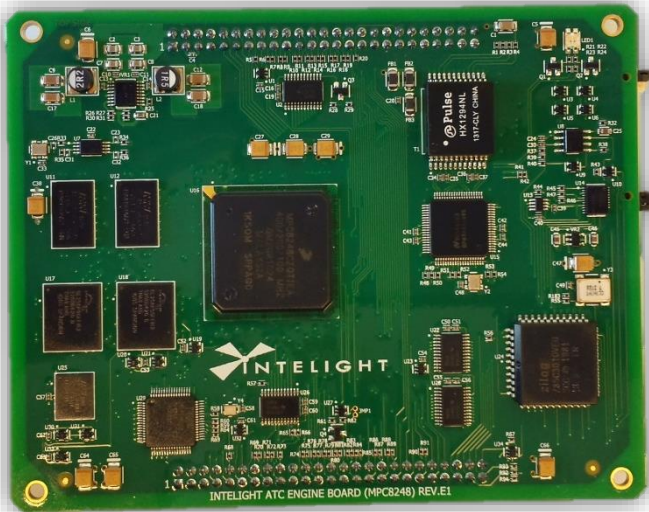


## Overview

The Intelight ATC Engine Board is compliant with the Advanced Traffic Controller (ATC) 5.2b and 6.1(draft) specifications and is the heart of the Intelight ATC controllers. This engine board provides a significantly faster platform that is capable of running a web-server user interface, provides better Ethernet communications switching, and has enough memory and processor power to support future feature work in MaxTime controller software.



## Platform

- Compliant with ATC 5.2b, ATC 6.1 (latest draft) specifications
- Open Linux O/S architecture for hosting various ATC software applications
- Runtime libraries per ATC5.2b (ATC 6.1 latest draft)
- Full support for all required ATC 6.1 software drivers under the latest Linux kernel release v 3.0
- Used in all Intelight ATC applications (See reverse side for controller compatibility)

## Engine Board

- Motorola PowerPC (Freescale) 8248 processor
  - 32-bit
  - 750 MIPS at 400 MHz
- 64MB of DRAM
- 64MB of flash memory
- 7 serial ports (SP1-6, SP8)
- Secure Digital (SD) card slot
- Standard ATC interface/form factor

## Hardware Configurations

- Intelight Controllers
  - X-Series controllers
    - X-3SL NEMA
    - X-3 NEMA
    - LDX 2070 style (ATC)
    - CBX (compact 2070 ATC)
- Siemens M50
  - Direct replacement for OS-9 engine board
  - Updates Siemens OS-9 software to Intelight's MaxTime Linux-based controller software

## Features

- Embedded Linux operating system
- Controller framework supports future expansion
- Open hardware platform
- Consistent user experience
- Ideal for multi-agency jurisdictions
- Supports multiple manufacturers  
"ATC/Linux" traffic signal software

### Distributed by CT Northwest

Phone 503.315.9899  
Fax 503.315.9913

info@kargor.com  
www.CT-Northwest.com  
3540 Brooks Ave NE #2, Salem, OR 97301



# INTELIGHT

intelight-its.com • info@intelight-its.com • 520 795-8808  
1941 1st Ave S, Suite 3C, Seattle, WA 98134